

FOR IMMEDIATE RELEASE

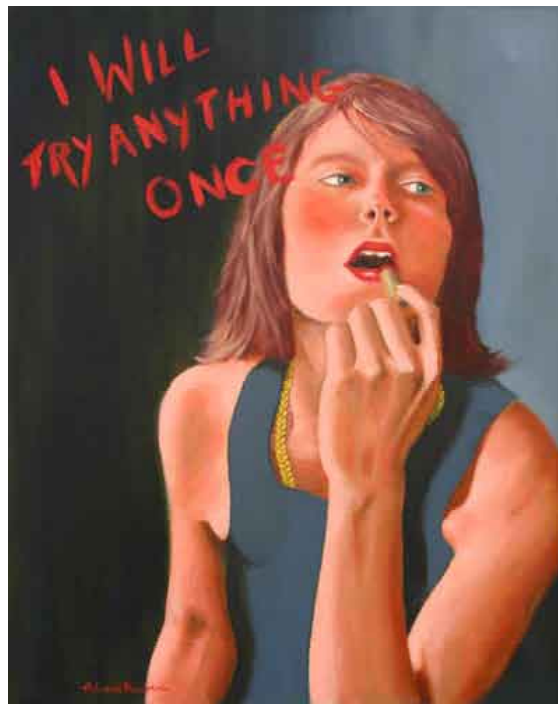
Contact: Drew Porterfield
202.232.4788
Drew_Porterfield@longviewgallery.com

LONG VIEW GALLERY ANNOUNCES NEW EXHIBITION

Suspended Animation
Alan Rubin



Alan Rubin
High Flyer
Oil on canvas, 30 x 18



Alan Rubin
I Will Try Anything Once
Oil on canvas, 25 x 20

May 12, 2007 – June 2, 2007
Artist Reception: Saturday, May 12, 6 to 8pm

Washington, D.C. – [April 10, 2007] – Long View Gallery is pleased to announce an exhibition of paintings by Alan Rubin from May 12 – June 2 with artist reception on Saturday, May 12, 2007 from 6 to 8 pm.

“[Alan Rubin’s] paintings often have the look of suspended animation, like frames pulled from a movie reel. His people are full of tension, caught between one highly charged moment and the next.”

-Washington Post

Alan Rubin, former owner of the Biograph Theater in Georgetown has in the last decade developed into a professional and prolific painter. Bold colors and fresh compositions express compelling moments in time. Influenced by his work in the theater, each painting exhibits a distinctly cinematic quality. The characters are interrupted in action arousing intrigue as the viewer interprets the scene. According to the Washington Post, “The characters that inhabit his paintings seem to have secrets and hidden stories lurking just below the surface.”

The moments Rubin captures on canvas generally go unnoticed in daily life, but their significance is conveyed by a heightened reality he displays in vibrant color schemes. Attention is given to minute details such as the curve of a jump rope or the explicitly painted veins in a pair of hands. These components reveal the subconscious and represent emotions and experiences common to all walks of life.

Alan Rubin has studied at both the Pratt Institute in New York and the Corcoran School of Art here in Washington DC. For several years he owned and operated the Biograph Theater, a cultural center constructed from an old car dealership in Georgetown. After supporting independent and classic films for thirty years, the theater closed in 1996 to make way for a CVS store. It was then that Alan decided to focus on his painting ability from his studio in Delaplane, Virginia. His work continues to engage his clients with fresh ways of looking at the world and interactions within.

About Long View Gallery

Long View Gallery (longviewgallery.com) was founded in 2000 by Andrew Haley and Suzanne Zylonis in Sperryville, Virginia, a small town that is 75 miles from Washington, D.C. In 2006, William Waybourn and Craig Spaulding joined with them to open the second Long View Gallery in the historic Shaw neighborhood of Washington, D.C. Long View presents an outstanding collection of contemporary American painting, sculpture, and jewelry, by regional and nationally known artists.

Long View in the Country
42 Main Street
Sperryville VA 22740
(540) 987-1000

Long View in theCity
1302 Ninth Street NW
Washington DC 20001
(202) 232-4788